

The **SIGNATURE LOOK**
GREAT QUALITY. GREAT VALUE.



SIGNATURE CHEF APPAREL

Keep your staff looking sharp in the kitchen with the Signature Chef clothing collection.

- ◆ Short-sleeved chef shirts feature a chest pocket and snap-button fasteners
- ◆ Lightweight, 65/35 poly-cotton blend
- ◆ Available in black and white



UNF-1KL

BLACK CHEF SHIRTS

ITEM	COLOR	SIZE	UOM	CASE
UNF-1KS	Black	S	Each	1/24
UNF-1KM	Black	M	Each	1/24
UNF-1KL	Black	L	Each	1/24
UNF-1KXL	Black	XL	Each	1/24
UNF-1KXXL	Black	2X	Each	1/24



UNF-1WL

WHITE CHEF SHIRTS

ITEM	COLOR	SIZE	UOM	CASE
UNF-1WS	White	S	Each	1/24
UNF-1WM	White	M	Each	1/24
UNF-1WL	White	L	Each	1/24
UNF-1WXL	White	XL	Each	1/24
UNF-1WXXL	White	2X	Each	1/24

SIGNATURE CHEF APPAREL



BLACK CHEF JACKETS

- ◆ Tapered fit
- ◆ Double breasted with pen/thermometer pocket
- ◆ 65/35 poly-cotton blend

ITEM	COLOR	SIZE	UOM	CASE
UNF-5KS	Black	S	Each	1/24
UNF-5KM	Black	M	Each	1/24
UNF-5KL	Black	L	Each	1/24
UNF-5KXL	Black	XL	Each	1/24
UNF-5KXXL	Black	2X	Each	1/24

WHITE CHEF JACKETS

- ◆ Universal fit
- ◆ Double breasted with pen/thermometer pocket
- ◆ 65/35 poly-cotton blend

ITEM	COLOR	SIZE	UOM	CASE
UNF-5WS	White	S	Each	1/24
UNF-5WM	White	M	Each	1/24
UNF-5WL	White	L	Each	1/24
UNF-5WXL	White	XL	Each	1/24
UNF-5WXXL	White	2X	Each	1/24

BLACK CHEF PANTS

- ◆ Relaxed fit
- ◆ Elastic waistband with drawstring
- ◆ 65/35 poly-cotton blend

ITEM	COLOR	SIZE	UOM	CASE
UNF-2KS	Black	S	Each	1/24
UNF-2KM	Black	M	Each	1/24
UNF-2KL	Black	L	Each	1/24
UNF-2KXL	Black	XL	Each	1/24
UNF-2KXXL	Black	2X	Each	1/24

HOUNDSTOOTH CHEF PANTS

- ◆ Relaxed fit
- ◆ Elastic waistband with drawstring
- ◆ 65/35 poly-cotton blend

ITEM	COLOR	SIZE	UOM	CASE
UNF-4KS	Houndstooth	S	Each	1/24
UNF-4KM	Houndstooth	M	Each	1/24
UNF-4KL	Houndstooth	L	Each	1/24
UNF-4KXL	Houndstooth	XL	Each	1/24
UNF-4KXXL	Houndstooth	2X	Each	1/24



UNF-5KL Chef Jacket
UNF-4KL Houndstooth Pants



UNF-5WL Chef Jacket
UNF-2KL Black Pants

SIZING GUIDE

SHIRTS SIZING CHART

MEASUREMENT (INCHES)	S	M	L	XL	2XL
Chest	44	48	51	54	56
Center Back	27	28	30	32	33

BLACK JACKET TAPERED FIT SIZING CHART

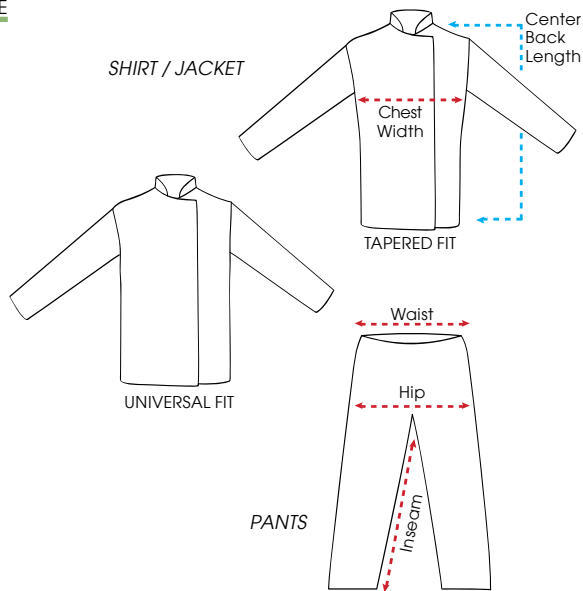
MEASUREMENT (INCHES)	S	M	L	XL	2XL
Chest	43	47.25	50	52.5	56
Center Back	31.5	32.5	32.5	33.25	34

WHITE JACKET UNIVERSAL FIT SIZING CHART

MEASUREMENT (INCHES)	S	M	L	XL	2XL
Chest	44.5	49	51.25	56.5	60.75
Center Back	31	32.25	33	34	34.5

PANTS SIZING CHART

MEASUREMENT (INCHES)	S	M	L	XL	2XL
Waist	36	40	43	46	49
Hip	40	44	47	50	53
Inseam	29	30	31	32	33



BIB APRONS



BA-SERIES
WITHOUT POCKETS



FULL-LENGTH BIB APRONS

- ◆ Pen and pad pockets on select items
- ◆ Cotton-poly blend, machine wash and dry
- ◆ Wrinkle resistant
- ◆ Assorted colors available
- ◆ 33"L x 26"W

ITEM	DESCRIPTION	UOM	CASE
BA-3226BK	Black w/o Pockets	Each	12/60
BA-3226WH	White w/o Pockets	Each	12/60
BA-PBG	Burgundy w/Pockets	Each	12/60
BA-PBK	Black w/Pockets	Each	12/60
BA-PBL	Blue w/Pockets	Each	12/60
BA-PGN	Green w/Pockets	Each	12/60
BA-PLG	Light Green w/Pockets	Each	12/60
BA-PRD	Red w/Pockets	Each	12/60
BA-PWH	White w/Pockets	Each	12/60
BA-PYL	Yellow w/Pockets	Each	12/60



BA-SERIES W/ PEN & PAD POCKETS

CHEF HATS



Adjustable
velcro closure



CH-13LG



CH-13BG



CH-13BK



CH-13BL



CH-13GN



CH-13RD



CH-13WH



CH-13YL



PROFESSIONAL CHEF HATS

- ◆ Cotton-poly blend, machine wash and dry
- ◆ Wrinkle resistant
- ◆ Adjustable velcro closure, one size fits most
- ◆ 13" high, band dimension adjusts from 21" to 24"
- ◆ Assorted colors available

ITEM	DESCRIPTION	UOM	CASE
CH-13BG	Burgundy	Each	24/96
CH-13BK	Black	Each	24/96
CH-13BL	Blue	Each	24/96
CH-13GN	Green	Each	24/96
CH-13LG	Light Green	Each	24/96
CH-13RD	Red	Each	24/96
CH-13WH	White	Each	24/96
CH-13YL	Yellow	Each	24/96



DCH-3

DCH-9

DCH-12

DISPOSABLE CHEF HATS

ITEM	DESCRIPTION	SIZE	UOM	CASE
DCH-3	3" H	100 pcs/Box	Box	10
DCH-9	9" H	10 pcs/Bag	Bag	20
DCH-12	12" H	10 pcs/Bag	Bag	20

WHITE COTTON SERVICE GLOVES

ITEM	DESCRIPTION	UOM	CASE
GLC-M	Medium (6 pairs)	Doz	100
GLC-L	Large (6 pairs)	Doz	100

WAIT SERVICE



GLC-M

BISTRO-LENGTH APRON

◆ Cotton-poly blend, machine wash and dry, wrinkle resistant

ITEM	DESCRIPTION	UOM	CASE
WA-3129K	31"L x 29-1/2"W	Each	12/60

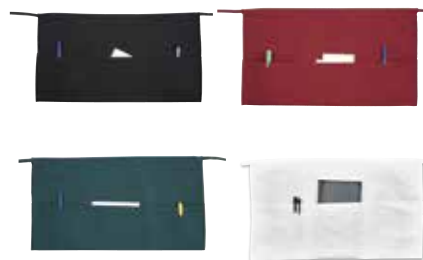


WA-3129K

3-POCKET WAIST APRONS

◆ Cotton-poly blend, machine wash and dry, wrinkle resistant

ITEM	DESCRIPTION	COLOR	UOM	CASE
WA-1221	12-1/2" x 21-3/4"	Black	Each	12/60
WA-1221G	12-1/2" x 21-3/4"	Green	Each	12/60
WA-1221R	12-1/2" x 21-3/4"	Burgundy	Each	12/60
WA-1221W	12-1/2" x 21-3/4"	White	Each	12/60



WA-SERIES

HEAVY VINYL APRONS

ITEM	DESCRIPTION	SIZE	UOM	CASE
BA-HN	Heavy Vinyl w/Pocket	26-1/2"W x 41-1/4"L	Each	12/24
BA-LA	Latex, Black	37"W x 44-1/2"L	Each	12

HEAVY VINYL APRONS



BA-LA



BA-HN