



# KITCHEN

Prep & Cook

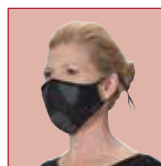
[www.winco.us.com/product-category/kitchen](http://www.winco.us.com/product-category/kitchen)



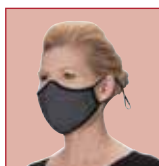
### REUSABLE & ADJUSTABLE 2-PLY FACE MASKS

- ◆ Outer: 100% Polyester, Lining: 60/40 Cotton/Poly
- ◆ Machine washable
- ◆ Non-medical grade
- ◆ Comfort fit with contoured nose
- ◆ Adjustable soft elastic ear loops for lasting comfort

ITEM	COLOR	SIZE	UOM	CASE
MSK-3ML	Camo	M/L	2 Pcs/Pk	50/250
MSK-3LXL	Camo	L/XL	2 Pcs/Pk	50/250
MSK-4GML	Gray	M/L	2 Pcs/Pk	50/250
MSK-4GLXL	Gray	L/XL	2 Pcs/Pk	50/250



Camouflage,  
Adjustable



Gray,  
Adjustable

### REUSABLE FACE MASKS

Great Quality. Great Value.



MSK-3ML

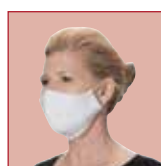
MSK-4GML



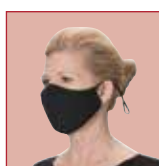
### REUSABLE & ADJUSTABLE 2-PLY FACE MASKS

- ◆ 100% Cotton
- ◆ Machine washable
- ◆ Non-medical grade
- ◆ Comfort fit with contoured nose
- ◆ Adjustable soft elastic ear loops for lasting comfort

ITEM	COLOR	SIZE	UOM	CASE
MSK-2WML	White	M/L	2 Pcs/Pk	50/250
MSK-2WLXL	White	L/XL	2 Pcs/Pk	50/250
MSK-2KML	Black	M/L	2 Pcs/Pk	50/250
MSK-2KLXL	Black	L/XL	2 Pcs/Pk	50/250



White,  
Adjustable



Black,  
Adjustable



MSK-2WML

MSK-2KML



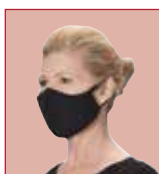
### REUSABLE 2-PLY FACE MASKS

- ◆ 100% Cotton
- ◆ Machine washable
- ◆ Non-medical grade
- ◆ Comfort fit with contoured nose
- ◆ Soft elastic ear loops for lasting comfort

ITEM	COLOR	SIZE	UOM	CASE
MSK-1WML	White	M/L	2 Pcs/Pk	50/250
MSK-1WLXL	White	L/XL	2 Pcs/Pk	50/250
MSK-1KML	Black	M/L	2 Pcs/Pk	50/250
MSK-1KLXL	Black	L/XL	2 Pcs/Pk	50/250



White



Black



MSK-1WML

MSK-1KML



Wash before wearing. Face coverings are not intended for medical use, and not proven to reduce the transmission of disease. Masks are intended for ADULT USE ONLY. They should not be placed on children under age 2, used by anyone with skin sensitivities, who has trouble breathing, or who is unconscious, incapacitated, or otherwise unable to remove the mask without assistance.





## THE SIGNATURE LOOK

Great Quality. Great Value.

Built tough to stand up to the demands of the commercial kitchen, **Signature Chef by Winco®** mixes all the right ingredients in chef apparel, fit for any budget.

### CHEF JACKETS



#### TAPERED FIT VENTILATED CHEF JACKETS - WHITE OR BLACK

- ◆ Cool mesh panels on back, sides and underarms
- ◆ Roll-up sleeves with one-button tab
- ◆ Left sleeve thermometer pocket
- ◆ 65/35 poly-cotton blend
- ◆ Available in white or black
- ◆ Color display box only available with full case (FC) qty

Refer to size chart at back of catalog



ITEM	COLOR	SIZE	UOM	CASE
UNF-12WS	White	S	Each	12/24
UNF-12WM	White	M	Each	12/24
UNF-12WL	White	L	Each	12/24
UNF-12WXL	White	XL	Each	12/24
UNF-12WXXL	White	2X	Each	12/24
UNF-12W3XL	White	3X	Each	12/24
UNF-12KS	Black	S	Each	12/24
UNF-12KM	Black	M	Each	12/24
UNF-12KL	Black	L	Each	12/24
UNF-12KXL	Black	XL	Each	12/24
UNF-12KXXL	Black	2X	Each	12/24
UNF-12K3XL	Black	3X	Each	12/24

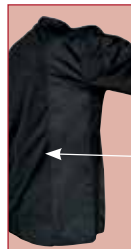


UNF-12WM

Wear sleeves long or rolled up



UNF-12KM



Ventilated

Ventilated back, both sides and underarms

Individually packaged in printed poly-bag



Color box with full case purchase



#### UNIVERSAL FIT CHEF JACKETS - WHITE

- ◆ Double breasted, with thermometer/pen pocket & chest pocket
- ◆ 65/35 poly-cotton blend
- ◆ Available in white
- ◆ Color display box only available with full case (FC) qty

Refer to size chart at back of catalog



ITEM	COLOR	SIZE	UOM	CASE
UNF-5WS	White	S	Each	12/24
UNF-5WM	White	M	Each	12/24
UNF-5WL	White	L	Each	12/24
UNF-5WXL	White	XL	Each	12/24
UNF-5WXXL	White	2X	Each	12/24
UNF-5W3XL	White	3X	Each	12/24



UNF-5WM

Individually packaged in printed poly-bag



Color box with full case purchase



## MEN'S TAPERED FIT CHEF JACKETS - RED, WHITE, BLACK CHEF JACKETS



- ◆ Double breasted with thermometer/pen pocket
- ◆ 65/35 poly-cotton blend
- ◆ Available in red, white or black
- ◆ Color display box only available with full case (FC) qty

Refer to size chart at back of catalog



ITEM	COLOR	SIZE	UOM	CASE
UNF-6RS	Red	S	Each	12/24
UNF-6RM	Red	M	Each	12/24
UNF-6RL	Red	L	Each	12/24
UNF-6RXL	Red	XL	Each	12/24
UNF-6RXXL	Red	2X	Each	12/24
UNF-6WS	White	S	Each	12/24
UNF-6WM	White	M	Each	12/24
UNF-6WL	White	L	Each	12/24
UNF-6WXL	White	XL	Each	12/24
UNF-6WXXL	White	2X	Each	12/24
UNF-6W3XL	White	3X	Each	12/24
UNF-6W4XL	White	4X	Each	12/24
UNF-6KS	Black	S	Each	12/24
UNF-6KM	Black	M	Each	12/24
UNF-6KL	Black	L	Each	12/24
UNF-6KXL	Black	XL	Each	12/24
UNF-6KXXL	Black	2X	Each	12/24
UNF-6K3XL	Black	3X	Each	12/24
UNF-6K4XL	Black	4X	Each	12/24

Individually packaged in printed poly-bag



Color box with full case purchase



UNF-6RM



UNF-6WM

UNF-6KM



## WOMEN'S TAPERED FIT CHEF JACKETS - WHITE OR BLACK

- ◆ Double breasted with thermometer/pen pocket
- ◆ 65/35 poly-cotton blend
- ◆ Available in white or black
- ◆ Color display box only available with full case (FC) qty

Refer to size chart at back of catalog



ITEM	COLOR	SIZE	UOM	CASE
UNF-7WS	White	S	Each	12/24
UNF-7WM	White	M	Each	12/24
UNF-7WL	White	L	Each	12/24
UNF-7KS	Black	S	Each	12/24
UNF-7KM	Black	M	Each	12/24
UNF-7KL	Black	L	Each	12/24

Individually packaged in printed poly-bag



Color box with full case purchase



UNF-7WM



UNF-7KM





## VENTILATED SHIRTS



### TAPERED FIT VENTILATED SHIRTS - WHITE OR BLACK

- ◆ Cool mesh panels on back, sides and underarms
- ◆ Wide chest pocket & double thermometer/pen pocket
- ◆ Lightweight 65/35 poly-cotton blend
- ◆ Available in white or black

◆ Color display box only available with full case (FC) qty

Refer to size chart at back of catalog

S M L XL 2X 3X



UNF-9WM

Ventilated back, sides and underarms

Cool Mesh



UNF-9KM

Ventilated back, sides and underarms



Individually packaged in printed poly-bag



Color box with full case purchase



## SNAP-BUTTON SHIRTS



### SNAP-BUTTON SHIRTS - WHITE OR BLACK

- ◆ Short-sleeved chef shirts feature a chest pocket and snap-button fasteners
- ◆ Lightweight 65/35 poly-cotton blend
- ◆ Available in white or black

◆ Color display box only available with full case (FC) qty

Refer to size chart at back of catalog

S M L XL 2X 3X 4X



UNF-1WM



UNF-1KM

Individually packaged in printed poly-bag



Color box with full case purchase

ITEM	COLOR	SIZE	UOM	CASE
UNF-1WS	White	S	Each	24/48
UNF-1WM	White	M	Each	24/48
UNF-1WL	White	L	Each	24/48
UNF-1WXL	White	XL	Each	24/48
UNF-1WXXL	White	2X	Each	24/48
UNF-1W3XL	White	3X	Each	24/48
UNF-1W4XL	White	4X	Each	24/48
UNF-1KS	Black	S	Each	24/48
UNF-1KM	Black	M	Each	24/48
UNF-1KL	Black	L	Each	24/48
UNF-1KXL	Black	XL	Each	24/48
UNF-1KXXL	Black	2X	Each	24/48
UNF-1K3XL	Black	3X	Each	24/48
UNF-1K4XL	Black	4X	Each	24/48



### WOMEN'S CHEF PANTS - BLACK

- ◆ Solid black, straight-leg
- ◆ Elastic drawstring waist
- ◆ Two front pockets
- ◆ 65/35 poly-cotton blend
- ◆ Color display box only available with full case (FC) qty

Refer to size chart at back of catalog

**S M L**

ITEM	COLOR	SIZE	UOM	CASE
UNF-8KS	Black	S	Each	12/24
UNF-8KM	Black	M	Each	12/24
UNF-8KL	Black	L	Each	12/24

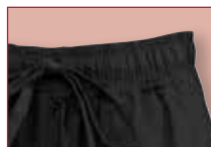
### BLACK PANTS



Individually packaged in printed poly-bag



Color box with full case purchase



Elastic drawstring waist



UNF-8KM



### CARGO CHEF PANTS - BLACK

- ◆ Solid black, universal fit
- ◆ Elastic drawstring waist
- ◆ Cargo pockets with velcro closure
- ◆ 65/35 poly-cotton blend
- ◆ Color display box only available with full case (FC) qty

Refer to size chart at back of catalog

**XS S M L XL 2X**

ITEM	COLOR	SIZE	UOM	CASE
UNF-11KXS	Black	XS	Each	12/24
UNF-11KS	Black	S	Each	12/24
UNF-11KM	Black	M	Each	12/24
UNF-11KL	Black	L	Each	12/24
UNF-11KXL	Black	XL	Each	12/24
UNF-11KXXL	Black	2X	Each	12/24

Individually packaged in printed poly-bag



Color box with full case purchase



Cargo pockets with velcro closure



UNF-11KM



### CHEF PANTS - BLACK

- ◆ Relaxed, universal fit; elastic drawstring waist
- ◆ Two side-seam pockets
- ◆ 65/35 poly-cotton blend
- ◆ Color display box only available with full case (FC) qty

Refer to size chart at back of catalog

**S M L XL 2X**

ITEM	COLOR	SIZE	UOM	CASE
UNF-2KS	Black	S	Each	12/24
UNF-2KM	Black	M	Each	12/24
UNF-2KL	Black	L	Each	12/24
UNF-2KXL	Black	XL	Each	12/24
UNF-2KXXL	Black	2X	Each	12/24

Individually packaged in printed poly-bag



Color box with full case purchase



Elastic drawstring waist



UNF-2KM



PATTERNED  
PANTS**CHEF PANTS - WOVEN CHALKSTRIPE**

- ◆ Relaxed, universal fit; elastic drawstring waist
- ◆ Two side-seam pockets
- ◆ 65/35 poly-cotton blend
- ◆ Color display box only available with full case (FC) qty

Refer to size chart at back of catalog

Individually packaged in printed poly-bag



Color box with full case purchase

**S M L XL 2X**

ITEM	COLOR	SIZE	UOM	CASE
UNF-3CS	Chalkstripe	S	Each	12/24
UNF-3CM	Chalkstripe	M	Each	12/24
UNF-3CL	Chalkstripe	L	Each	12/24
UNF-3CXL	Chalkstripe	XL	Each	12/24
UNF-3CXXL	Chalkstripe	2X	Each	12/24



UNF-3CM



Woven pattern



Elastic drawstring waist

**CHEF PANTS - HOUNDSTOOTH**

- ◆ Relaxed, universal fit; elastic waistband with inner drawstring
- ◆ Two side-seam pockets
- ◆ 65/35 poly-cotton blend
- ◆ Color display box only available with full case (FC) qty

Refer to size chart at back of catalog

Individually packaged in printed poly-bag



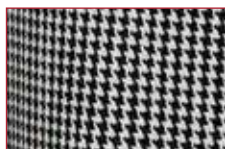
Color box with full case purchase

**S M L XL 2X**

ITEM	COLOR	SIZE	UOM	CASE
UNF-4KS	Houndstooth	S	Each	12/24
UNF-4KM	Houndstooth	M	Each	12/24
UNF-4KL	Houndstooth	L	Each	12/24
UNF-4KXL	Houndstooth	XL	Each	12/24
UNF-4KXXL	Houndstooth	2X	Each	12/24



UNF-4KM



Pattern



Elastic waistband, inner drawstring





## HEAVYWEIGHT DENIM BIB APRON, CROSS-BACK

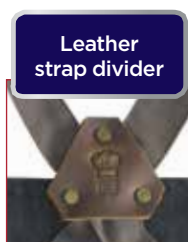
*Stylish and functional, the dark wash denim masks spills and stains while keeping up appearances.*

- ◆ 80/20 cotton-poly blend dark wash denim
- ◆ Contrast stitching and brass rivet details
- ◆ Cross-back straps adjust for best fit
- ◆ Two (2) slanted waist pockets
- ◆ Thermometer/pen pocket
- ◆ 31-3/4"L x 26-3/4"W
- ◆ Color display box only available with full case (FC) qty

ITEM	COLOR	UOM	CASE
BADN-3126	Dark Wash w/Brown Straps	Each	12/24



Cross-back



Leather strap divider



## BIB APRONS



BADN-3126

Individually packaged in printed poly-bag



Color box with full case purchase



## HEAVYWEIGHT DENIM BIB APRON, ADJUSTABLE NECK

*Hard-wearing style that can handle the hustle. Adjust the neck strap to achieve the perfect length.*

- ◆ 80/20 cotton-poly blend dark wash denim
- ◆ Adjustable neck accommodates most heights
- ◆ Two (2) vertical waist pockets
- ◆ Open chest pocket
- ◆ Zippered cell-phone pocket
- ◆ 34-1/2"L x 30-1/4"W
- ◆ Color display box only available with full case (FC) qty

ITEM	COLOR	UOM	CASE
BADN-3430	Dark Wash w/Gray Straps	Each	12/24



Adjustable neck strap



BADN-3430





**BIB APRONS****MID-WEIGHT BIB APRONS**

*The perfect addition to uniforms calling for a streamlined look.*

- ◆ Blue apron is 65/35 poly-cotton blend
- ◆ Black apron is 80/20 poly-cotton blend
- ◆ Adjustable snap-button neck strap for the best fit
- ◆ Thermometer/pen pocket
- ◆ Eight (8) varying size waist pockets to hold supplies
- ◆ 33-1/2"L x 27"W

◆ Color display box only available with full case (FC) qty



BA-3327B  
Model: 5' 3"

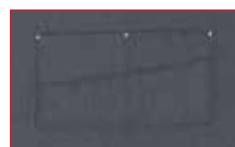


BA-3327K

ITEM	COLOR	UOM	CASE
BA-3327B	Blue	Each	24/48
BA-3327K	Black	Each	24/48



Adjustable neck strap



8 pockets at waist



Individually packaged in printed poly-bag

Color box with full case purchase

INDIVIDUALLY  
PACKAGED IN  
PRINTED POLY-BAG

**WOVEN CHALKSTRIPE BIB APRON**

*The stripe pattern of this bib apron is woven in, making for a lasting appearance that stands up to busy service and bartending shifts.*

- ◆ 65/35 poly-cotton blend
- ◆ Two (2) waist pockets; designed to hold digital tablets up to 8" wide
- ◆ 33-1/2"L x 27"W

ITEM	DESCRIPTION	UOM	CASE
BA-3427CS	Chalkstripe w/Pockets	Each	12/60



BA-3427CS



Model: 6'



Woven pattern

INDIVIDUALLY  
PACKAGED IN  
PRINTED POLY-BAG

**3-POCKET MID-LENGTH BIB APRONS**

- ◆ 65/35 poly-cotton blend
- ◆ Adjustable neck strap
- ◆ 24"L x 27-1/2"W

ITEM	COLOR	UOM	CASE
BA-2724W	White	Each	12/60
BA-2724K	Black	Each	12/60



BA-2724W



BA-2724K  
Model: 5' 3"

**FULL-LENGTH BIB APRONS**

- ◆ Pen and pad pockets on select items
- ◆ Cotton-poly blend, machine wash and dry; wrinkle-resistant
- ◆ Assorted colors available
- ◆ 33"L x 26"W

ITEM	DESCRIPTION	UOM	CASE
BA-3226WH	White, No Pockets	Each	12/60
BA-3226BK	Black, No Pockets	Each	12/60
BA-PBG	Burgundy, w/Pockets	Each	12/60
BA-PBK	Black, w/Pockets	Each	12/60
BA-PBL	Blue, w/Pockets	Each	12/60
BA-PGN	Green, w/Pockets	Each	12/60
BA-PLG	Light Green, w/Pockets	Each	12/60
BA-PRD	Red, w/Pockets	Each	12/60
BA-PWH	White, w/Pockets	Each	12/60



Available Colors

BA-SERIES, WITH PEN &amp; PAD POCKETS

**WAIT SERVICE APRONS**

BA-SERIES, WITHOUT POCKETS

BA-PBL  
Model: 6'INDIVIDUALLY  
PACKAGED IN  
PRINTED POLY-BAG**BISTRO FULL LENGTH APRONS**

*These full length bistro/waist aprons are a versatile addition to staff uniforms, easily transitioning from casual to formal, all with a polished look.*

- ◆ 65/35 poly-cotton blend
- ◆ Two (2) large utility pockets; fits most digital tablets

ITEM	DESCRIPTION	UOM	CASE
WA-3129WH	White	Each	12/60
WA-3129BK	Black	Each	12/60



WA-3129BK

WA-3129WH

INDIVIDUALLY  
PACKAGED IN  
PRINTED POLY-BAG**BISTRO HALF LENGTH APRONS**

*Simple and crisp, the half length bistro aprons are adaptable across a multitude of settings.*

- ◆ 65/35 poly-cotton blend
- ◆ Two (2) utility pockets; fits most digital tablets
- ◆ 19"L x 28"W

ITEM	DESCRIPTION	UOM	CASE
WA-2819W	White	Each	12/60
WA-2819K	Black	Each	12/60



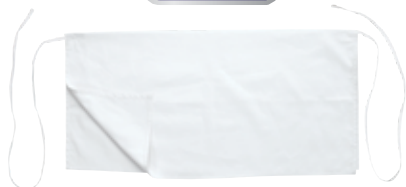
WA-2819K

WA-2819W

## SERVICE APRONS



4 aprons  
in one



WA4-3417W



WA4-3417K

INDIVIDUALLY  
PACKAGED IN  
PRINTED POLY-BAG



### FOUR-WAY APRONS

These aprons offer four (4) surfaces for a quick-flip change to present a clean side on the fly, without the need for switching to a new apron.

- ◆ 65/35 poly-cotton blend
- ◆ 17"L x 34"W

ITEM	DESCRIPTION	UOM	CASE
WA4-3417W	White	Each	12/60
WA4-3417K	Black	Each	12/60



Models (L to R): 6' / 5' 3" / 5' 7"



### 3-POCKET WAIST APRONS

- ◆ Cotton-poly blend, machine wash and dry, wrinkle resistant
- ◆ Available in four (4) colors
- ◆ 12-1/2"L x 21-3/4"W

ITEM	DESCRIPTION	UOM	CASE
WA-1221	Black	Each	12/60
WA-1221G	Green	Each	12/60
WA-1221R	Burgundy	Each	12/60
WA-1221RED	Red	Each	12/60
WA-1221W	White	Each	12/60



WA-1221



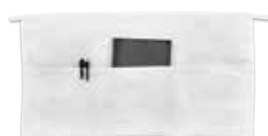
WA-1221R



WA-1221G



WA-1221RED



WA-1221RW

## SERVICE GLOVES

6 pairs  
per pack

GLC-M



### WHITE COTTON SERVICE GLOVES

- ◆ Elevate the dining experience
- ◆ 100% cotton
- ◆ 12 gloves (6 pairs) per pack

ITEM	DESCRIPTION	COLOR	UOM	CASE
GLC-M	Medium	White	Doz	100
GLC-L	Large	White	Doz	100



## DISHWASHING APRONS

The easy on-and-off, full-length dishwashing aprons repel spills and splashes, keeping uniforms dry and presentable throughout a shift.

- ◆ Water resistant
- ◆ Black apron is lightweight nylon/PVC/polyester blend
- ◆ Brown apron is heavyweight vinyl with faux leather front

ITEM	DESCRIPTION	SIZE	UOM	CASE
BAW-2540BK	Black	27-1/2" W x 40"L	Each	12/60
BAW-2740BN	Brown	25-1/2" W x 40"L	Each	12/60



Brown faux leather texture



BAW-2740BN



BAW-2540BK



INDIVIDUALLY  
PACKAGED IN  
PRINTED POLY-BAG



## HEAVY VINYL APRONS

ITEM	DESCRIPTION	SIZE	UOM	CASE
BA-HN	Heavy Vinyl w/Pocket	41-1/4"L x 26-1/2"W	Each	12/24
BA-LA	Latex	44-1/2"L x 37"W	Each	12



BA-LA



BA-HN



## DISPOSABLE APRON

Quickly slip on over clothing to protect from spills and splashes.

- ◆ White plastic, waterproof bib apron
- ◆ 1 mil standard weight
- ◆ Disposable for easy, mess-free clean up
- ◆ One size fits most

ITEM	DESCRIPTION	SIZE	UOM	CASE
BADP-2846	100 Pcs/Box	28" x 46"	Box	1/12



## DISPOSABLE APRON



100 pieces per  
dispenser box

BADP-2846





## CHEF HATS



CHPB-3RR



CHPB-3WR



CHPB-3BR

Individually packaged in printed poly-bag



Color box with full case purchase



## VENTILATED PILLBOX HATS

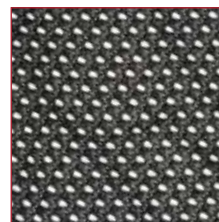
The lightweight pillbox hat features straight sides with no brim for a clean, professional look. The ventilated mesh top is designed to help keep a cool head, and the elastic band on the back allows for a snug, secure fit.

- ◆ 65/35 poly-cotton blend
- ◆ Cool mesh top panel and elastic back
- ◆ Available in regular and extra-large sizes
- ◆ Color display box only available with full case (FC) qty

ITEM	DESCRIPTION	UOM	CASE
CHPB-3RR	3.5"H, Red, Regular	Each	48/96
CHPB-3RX	3.5"H, Red, X-Large	Each	48/96
CHPB-3WR	3.5"H, White, Regular	Each	48/96
CHPB-3BR	3.5"H, Black, Regular	Each	48/96
CHPB-3WX	3.5"H, White, X-Large	Each	48/96
CHPB-3BX	3.5"H, Black, X-Large	Each	48/96



Elastic back



Cool mesh top



Adjust ties at back for best fit



CHHW-3K

Individually packaged in printed poly-bag



Color box with full case purchase



## HEAD WRAP

- ◆ 65/35 poly-cotton blend
- ◆ Lightweight, breathable comfort
- ◆ Ties at back adjust for best fit
- ◆ One size fits most
- ◆ Color display box only available with full case (FC) qty

ITEM	DESCRIPTION	UOM	CASE
CHHW-3K	Black	Each	48/96



## BASEBALL CAP

- ◆ 65/35 poly-cotton blend
- ◆ Adjustable metal buckle for best fit
- ◆ Sturdy visor
- ◆ Eyelet ventilation on top
- ◆ Built-in sweatband helps to wick away moisture
- ◆ Color display box only available with full case (FC) qty

ITEM	DESCRIPTION	UOM	CASE
CHBC-4BK	Black	Each	36/72



CHBC-4BK



Adjustable

Individually packaged in printed poly-bag



Color box with full case purchase





## FABRIC PROFESSIONAL CHEF HATS

- ◆ 65/35 poly-cotton blend
- ◆ Wrinkle resistant in assortment of colors
- ◆ Adjustable velcro closure from 21" to 24"
- ◆ Wide head band; 13" high overall

ITEM	DESCRIPTION	UOM	CASE
CH-13BG	Burgundy	Each	24/96
CH-13BK	Black	Each	24/96
CH-13BL	Blue	Each	24/96
CH-13GN	Green	Each	24/96
CH-13LG	Light Green	Each	24/96
CH-13RD	Red	Each	24/96
CH-13WH	White	Each	24/96



Burgundy

Blue

Green

Light Green

Red

## CHEF HATS



CH-13BK



CH-13WH

Adjustable  
velcro closure

INDIVIDUALLY  
PACKAGED IN  
PRINTED POLY-BAG

## DISPOSABLE CHEF HATS

- ◆ White paper
- ◆ Three height options
- ◆ Wide head band

ITEM	DESCRIPTION	SIZE	UOM	CASE
DCH-3	3" H	100 pcs/Box	Box	1/10
DCH-9	9" H	10 pcs/Bag	Bag	1/20
DCH-12	12" H	10 pcs/Bag	Bag	1/20



DCH-3






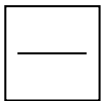
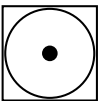


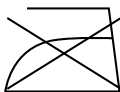
DCH-9



DCH-12

Check the care label on each item  
for exact care instructions

## CARE GUIDE

Washing	 Hand wash cold with like colors	 Do not bleach	 Non-chlorine bleach, only when necessary
Drying	 Dry flat	 Tumble dry low	 Do not tumble dry
Ironing	 Warm iron as needed	 Do not iron	



# THE SIGNATURE LOOK MERCHANDISING DISPLAY

*Holds 24 Cases*

**FREE**  
**SIGNATURE CHEF**  
**DISPLAY**

available with  
qualifying  
order

*1 display per location*

Items individually  
packaged in printed  
clear bag

*Resealable  
zipper closure*



Color Box is available  
with each FC/full case  
purchase per item.

*Available with select  
items as noted.*

